



The Garden Inn

Bed and Breakfast



Monterey, Tennessee

1400 Bee Rock Road
Monterey, TN 38574
(888) 293-1444 – (931) 839-1400
Fax (931) 839-1410
Mike & Mirtha Kopec, Innkeepers
www.TheGardenInnBB.com
Info@TheGardenInnBB.com

We invite you to come and relax at the edge of the Cumberland Plateau at The Garden Inn. Surround yourself with fifteen acres of mountain scenery, hiking trails, gardens, and landscaped beauty. You will enjoy an atmosphere of peaceful elegance in the backyard of Mother Nature's mountain splendor.

The grounds of The Garden Inn include tall trees, natural rock formations, stone bridges, caves, and breathtaking bluffs. The towering Bee Rock overlook offers a spectacular panoramic view of Calkiller Valley and Stamps Hollow below.

The Garden Inn offers the visitor a great selection of rooms with various amenities, including whirlpool tubs and fireplaces. Of the eleven rooms, four have garden views and seven have mountain views.

Our guests may savor a full breakfast of a hot entrée, fresh fruits, homemade breads and pastries, juices, hot coffee, and assorted teas in the dining room or on the deck overlooking the spectacular mountain view.

Pass the time with a good book in the living area or enjoy the mountain views from the upper deck. You'll remember The Garden Inn for its relaxed atmosphere and attentive hosts, who are dedicated to providing a special environment to make your stay a memorable experience.

With fifteen acres of woods, sandstone bluffs, and cool mountain breezes, the Inn is perfect for that summer outdoor wedding.

Guest Rooms

Guests may select from a choice of eleven rooms, each furnished with handcrafted solid cherry or walnut antique reproduction furniture. All guestrooms have queen-sized beds and private baths. Two guestrooms have gas fireplaces and three guestrooms are equipped with spacious whirlpool tubs.

All rooms are furnished with handcrafted solid cherry or walnut furniture with queen-sized beds and are priced at \$135 - \$145 per evening plus tax (group and corporate rates are available).

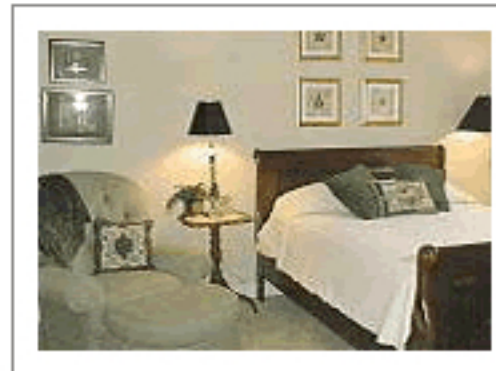
The quoted rates are for double occupancy per night and do not include taxes. In rooms that accommodate a third guest, an additional \$25.00 charge applies to each night's stay.

Check-in time is between 3:00 pm and 6:00 pm CST with checkout time at 11:00 am.

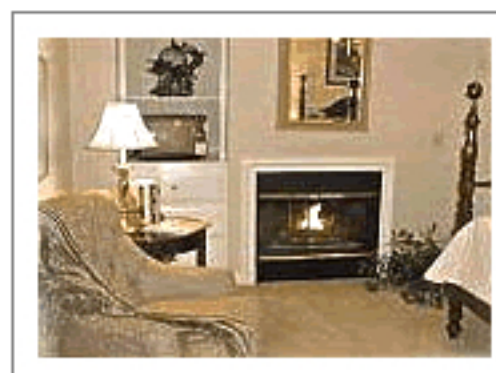
The Inn accepts Visa, MasterCard, American Express, and Discover credit cards. Our Inn is a smoke-free facility. We cannot accept any pets or children younger than ten years of age.

The room price includes evening dessert and coffee. The Inn serves a gourmet breakfast the following morning, which is also included.

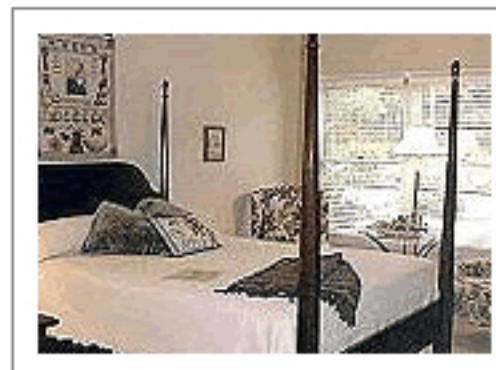
Guest rooms are available to corporate and executive groups on Sunday through Thursday evenings at a discounted rates.



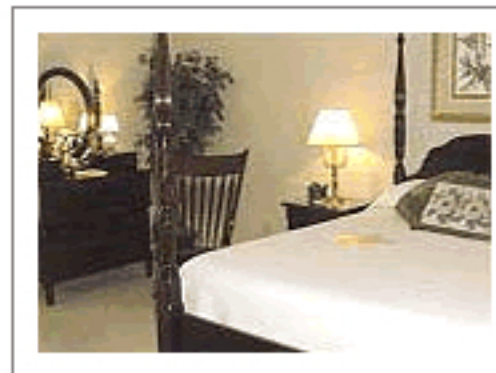
The Autumn Leaves



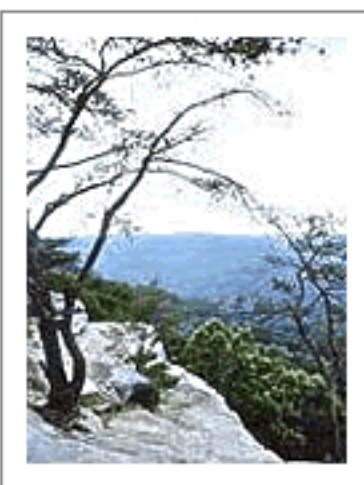
The Sunflower



The Orchard



The Magnolia



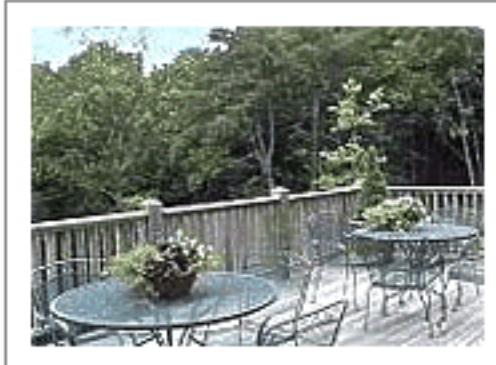
Beautiful Views



Our Grounds

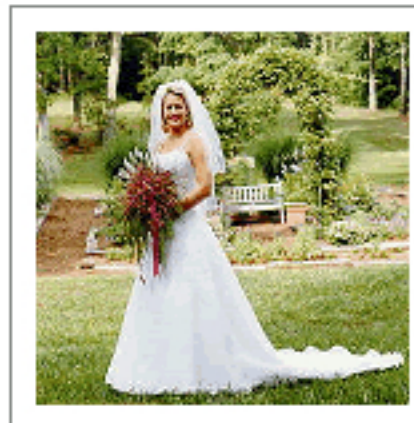


The Dining Room



Balcony

Weddings



Weddings at The Garden Inn are intimate, elegant events. Whether an outdoor garden setting or an indoor fireside or mountain view background, we make every wedding unique and memorable for the bridal couple as well as their special guests and family.

Directions

From Interstate 40 East (Nashville)

Exit at Exit #300, Monterey / Highway 70. At the bottom of the exit ramp, turn right onto Hwy. 70. Go approximately 300 feet and turn left onto Bee Rock Road (a dead end road) by the Garden Inn sign. Go approximately one-half mile to the end of the road; our driveway is on the left at the miniature version of our sign.

From Interstate 40 West (Knoxville)

Exit at Exit #300, Monterey / Highway 70. At the bottom of the exit ramp, turn left onto Hwy. 70 and go under the interstate. Go approximately ¼ mile and turn left onto Bee Rock Road (a dead end road) by the Garden Inn sign. Go approximately one-half mile to the end of the road; our driveway is on the left at the miniature version of our sign.